

# GTU

## Diagnostic System

The **Green Tire Uniformity (GTU) Diagnostic System** utilizes ByteWise Sheet-of-Light Profile Sensor to digitize the surface geometry of the green tire during any step in the tire building process from innerliner and body ply application to final green tire stitching. This geometry data set is then displayed for analysis. The GTU Diagnostic System is a valuable tool in assessing uniformity of the tire building process. Diagnostic data can be used to establish correlations between green tire geometry and cured tire uniformity.



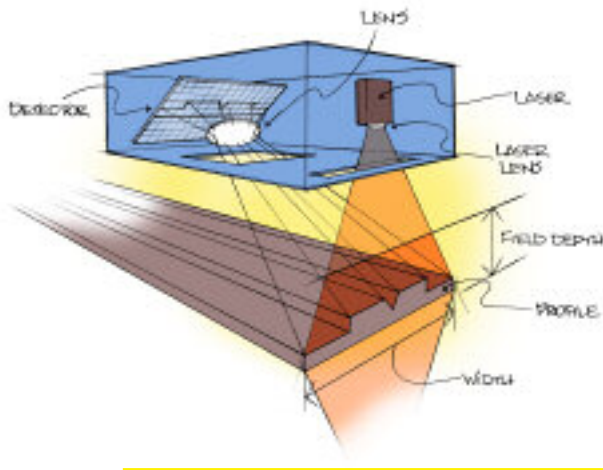
### Features

- VHSL Sensor
- Portable tripod mounting
- Easy to use Software

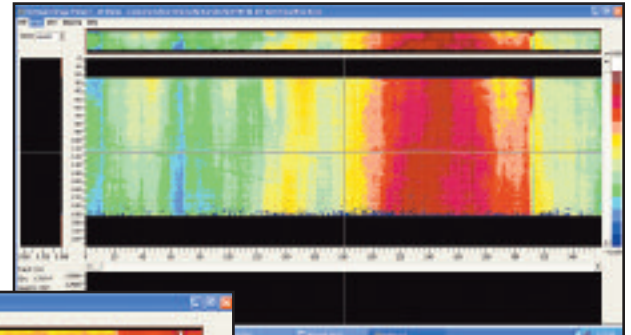
### Benefits

- Sensor combines detector and laser light source so as to reduce problems due to lighting angle or distance.
- Designed to recognize black features on a black background.
- High speed (see specs).
- Permits fast and easy setup at multiple locations at each Tire Building Machine.
- Start and stop commands from keyboard.
- Immediate 3-D visualization of scan data.
- Easy to use runout measurement tools.

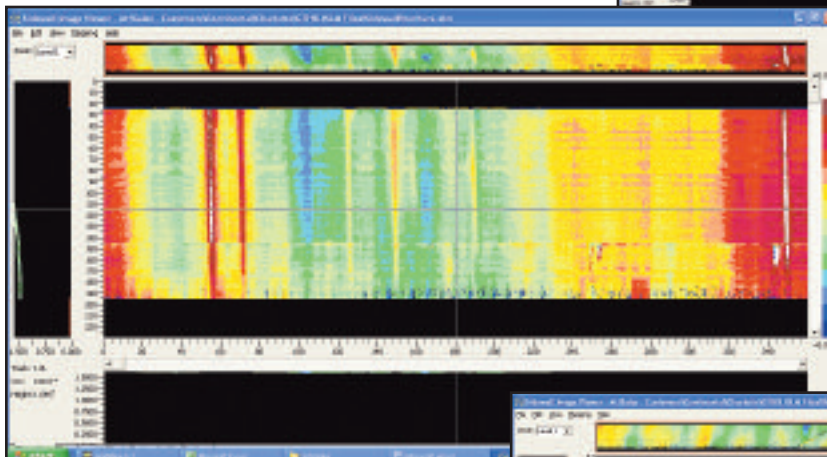
How It Works



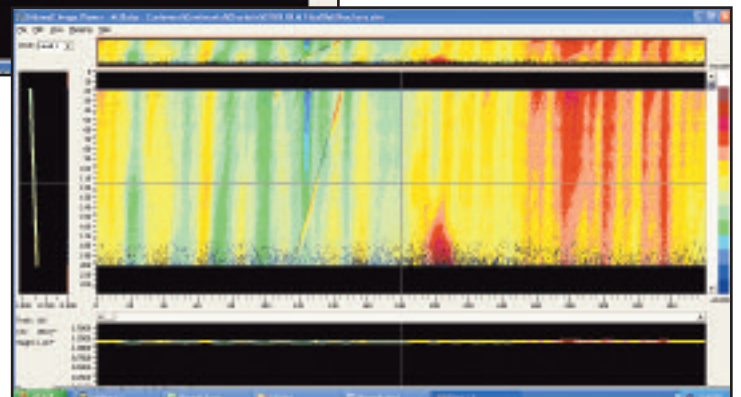
Software



Radial Scan



Sidewall Scan



Belt Splice Zoom Scan

Specifications

Measurement Parameter

Width Field-of-View*	300 near – 400 far
Depth Field-of-View*	200mm
Standoff Distance	500mm – 700mm
Width Resolution	.2mm
Depth Resolution	.1mm
Frequency Range	up to 2,000Hz
Laser Classification	IIIa CDRH
*Specialized FOV Available	